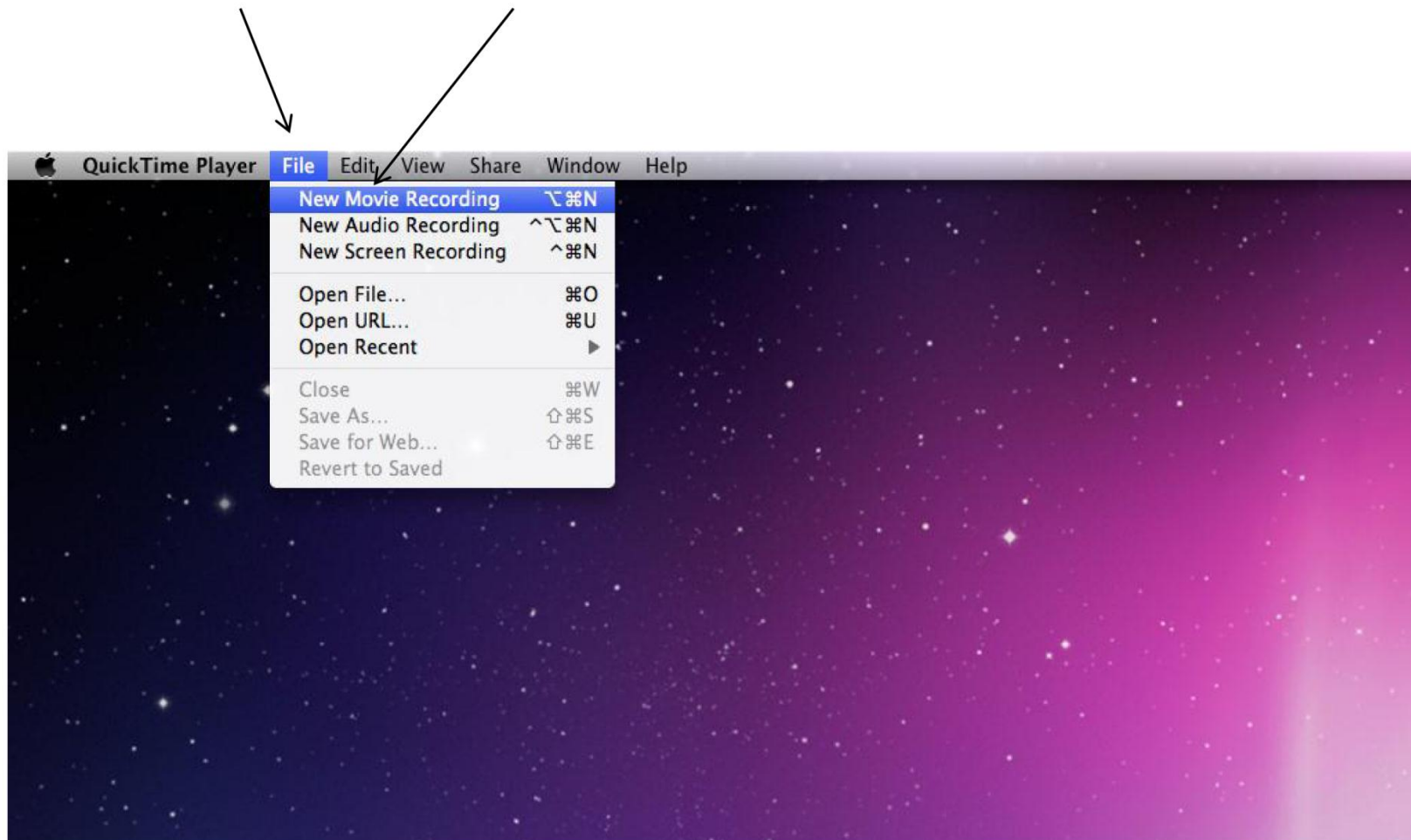
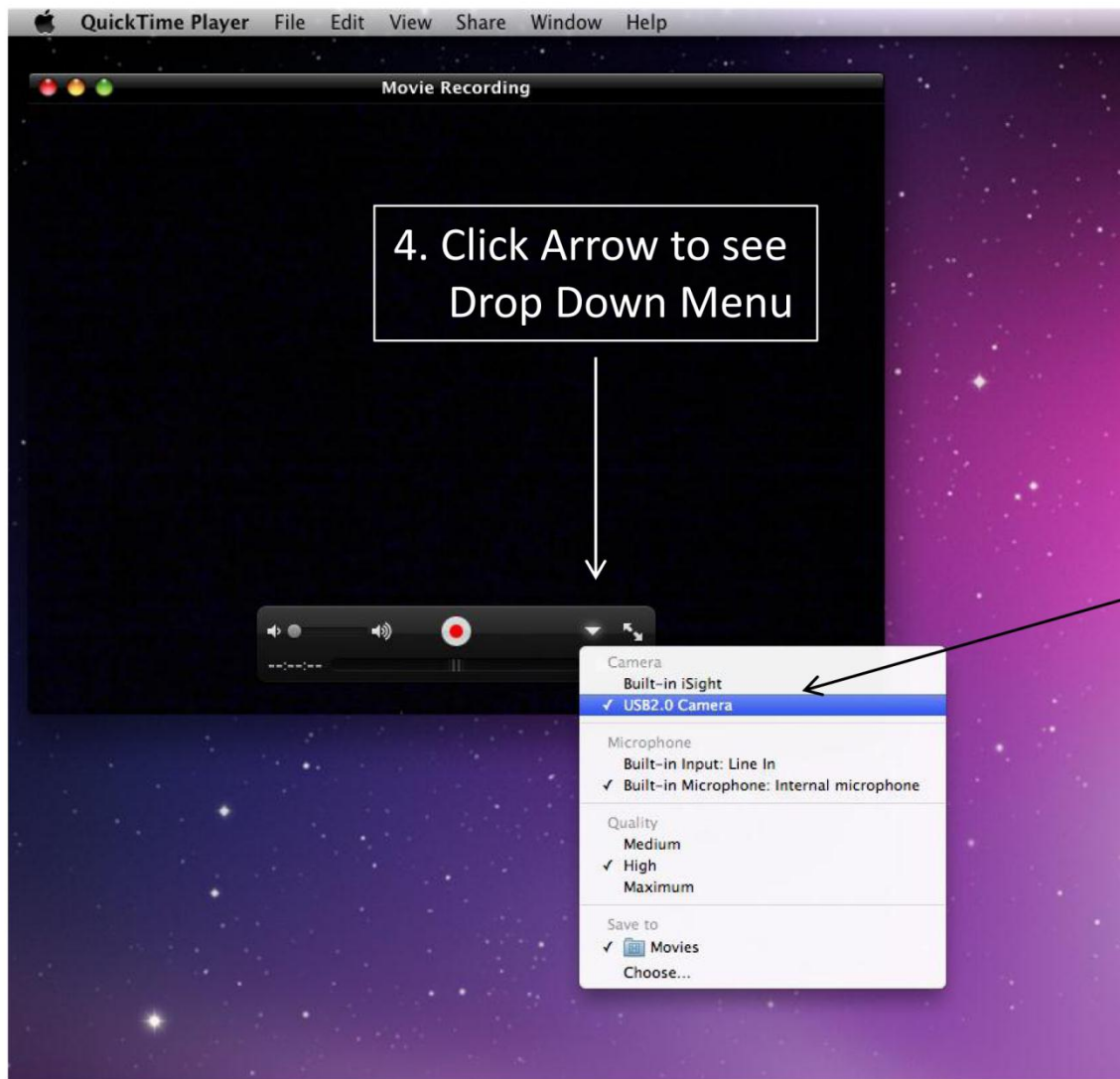


# Steps to access the Trainer Camera using QuickTime

Note: Using Quicktime allows the user to choose a camera other than iSight and eliminate the “mirror image” issues experienced using Photo Booth.

1. Plug Webcam into Laptop
2. Open Quick Time Player
3. Choose “File”, then “New Movie Recording”





4. Click Arrow to see Drop Down Menu

5. Next Choose "USB 2.0 Camera"

You are finished.